

CONTENTS



Welcome Message	1
Organizers:	3
<i>APA and Its Council</i>	3
<i>International Organizing Committee (IOC)</i>	4
<i>Scientific Committee</i>	4
<i>APA Secretariat Team</i>	4
<i>Theme Conveners and Reviewers</i>	5
<i>National Organizing Committee Secretariat Team</i>	7
<i>Host and Co-hosts</i>	8
Conference Information:	10
<i>Locations of the conference hotels and venues</i>	10
<i>Conference Hotels</i>	11
<i>Conference Venues</i>	12
<i>Exhibitors and Sponsors</i>	17
<i>Registration</i>	18
<i>Work space</i>	18
<i>Conference badge</i>	18
<i>Support staff</i>	18
<i>Internet access</i>	18
<i>Conference Website</i>	19
<i>Welcome Drink, Reception Dinner, Lunch, Tea Breaks</i>	19
<i>Information about Shanghai</i>	19
<i>Scientific Program Overview</i>	20
Plenary Sessions and Social Events	21
Chronological List of Sessions	23
Workshop and Special Workshop	27
Sessions	29

Welcome Message



A very warm welcome to friends and colleagues ready to take part in the 4th Asian Population Association (APA) Conference, to be held on July 11-14, 2018 at Shanghai University, China.

Shanghai, literally meaning “on the sea”, is an outstanding location for the population conference. In addition to its impressive modernization including new skyscrapers, Shanghai provides a unique and perfect blend of cultures, the modern and the traditional, and the Western and Oriental. It is also one of the most populated cities in the world, with a permanent resident population of 25 million, of which nearly 10 million are immigrants. There are also additional millions of migrant workers in the municipality.

The APA is delighted to have received an enthusiastic response to its call for submission of abstracts. The Scientific Committee has been working diligently on the 1,830 abstracts from more than 45 countries. The 4th APA Conference will cover a wide variety of areas in population studies including fertility, mortality, marriage, aging, sexuality, reproductive health, environment, education, migration, and labor force. Methodology and the quality of data will also be explored. The Conference will be composed of plenary and special sessions, presentations, poster sessions, and pre-/post side meetings.

The Asian Demographic Research Institute (ADRI) at Shanghai University, together with the China Population Association, Shanghai Population Association, China Population and Development Research Center, Fudan University, East China Normal University, Shanghai Academy of Social Science, and Shanghai Academy joined forces to organize this Conference. Without the hard work of the Local Organizing Committee led by Professor Leiwen Jiang and financial support from Shanghai University,

2

the Conference would not have been possible. I would like to extend my deepest appreciation to the members of the Local Organizing Committee.

I am sure the presentations, posters, discussions, and exchange of ideas, together with all the efforts of the Scientific Committee, will contribute to the advancement of Asian demography and make the 4th APA Conference a big success. My special gratitude is extended to Professor Sureeporn Punpung, chair of the Scientific Committee, the Council members, the Secretariat, and voluntary reviewers of the abstracts for their determination and hard work. Finally, but most importantly, I would like to thank those who devoted a considerable amount of time and effort preparing and revising their abstract and paper.

I look forward to seeing you in Shanghai this coming July.

With best wishes



Doo-Sub Kim
President, Asian Population Association



Organizers:

APA and Its Council

Asia is the world's largest and most populous continent. With almost four billion people, it is home to more than 60% of the world's current population, including the two largest national populations; China and India. Asia is also the center of some of the fastest sustained economic growth rates in the world as well as some of the most intractable problems of poverty. It is home to several language families and many language isolates. Indeed, Asia is both diverse and dynamic in terms of population growth trends. There are many emerging population issues having significant impacts on the future of the world's population as they pose major challenges to communities and local governments across the region. Thus, there is a great need for scientific studies of population that can be translated into policy actions in countries with diverse socio-demographic settings.

APA was registered in Bangkok in 2008 and the Secretariat was set up at the College of Population Studies at Chulalongkorn University. In 2011, the Secretariat was moved to the Institute for Population and Social Research at Mahidol University. A change in the constitution in 2012 extended the term of the council from two to three years. The fourth elected council members (also members of the 4th APAC International Organizing committee) are listed in the table below.

The fifth online election of the APA council members will be in October 2018, which the elected council members will be in the position during 2019-2021.

International Organizing Committee (IOC)

President	Doo-Sub Kim	South Korea	Chair of IOC
Vice President	Baochang Gu	China	Vice Chair of IOC
Immediate Past President	Terence H. Hull	Australia	IOC member
Secretary General	Paul Yip	Hong Kong, China	IOC member
Treasurer	Bhassorn Limanonda	Thailand	IOC member
Council member	K.G. Santhya	India	IOC member
	Sureeporn Punpuing	Thailand	IOC member
	Wendy Hartanto	Indonesia	IOC member
	Yasuhiko Saito	Japan	IOC member
	Youngtae Cho	South Korea	
	Rossarin Gray	Thailand	IOC member

Scientific Committee

Chair	Sureeporn Punpuing
Members	Rossarin Gray
	Leiwen Jiang
	Santhya KG

APA Secretariat Team

Rossarin Gray
 Malee Sunpuwan
 Sarayut Sakultantimetha
 Pasakorn Boonkhum
 Sirinya K.K

Theme Conveners and Reviewers

Theme 1 Fertility and Reproductive Health

Convener: Terence Hull, K G Santhya, Wendy Hartanto

Reviewer: Adrian Hayes, Alan Feranil, Baochang Gu, Connie Gultiano, Gavin Jones, Nimfa Ogena, Ryuichi Kaneko, Sorapop Kiatpongsan, Sureeporn Punpuing, Terence Hull, Valerie Hull, Wassana Im-Em, Wei Chen, Zhenzhen Zheng, Zhongwei Zhao

Theme 2 Mortality, Morbidity, and Epidemiology

Convener: Baochang Gu, Zhongwei Zhao

Reviewer: Abdullah H.M. Al-Khalifah, Dudley Poston, Joo Ean Tan, Juhua Yang, Kaining Zhang, Peng Du, Wan He, Xiaochun Qiao, Xizhe Peng, Xuejin Zuo, Yuan Ren, Zhenmin Xie

Theme 3 Migration Urbanization

Convener: Sureeporn Punpuing

Reviewer: Amara Soonthorndhada, Aphichat Chamrathirong, Aris Ananta, Charamporn Holumyong, E.L. Sunethra, J. Perera, Evi Nurvidya Arifin, Kathleen Ford, Laishram Ladusingh, Li Zhang, Ram B. Bhagat, Sayeed Unisa, Sudarat Musikawong, Sureeporn Punpuing, Yaghoob Foroutan, Yu Zhu

Theme 4 Marriage, Family, and Kinship

Convener: Doo-Sub Kim, Bhassorn Limanonda

Reviewer: Chun-Hao Li, Doo-Sub Kim, Noriko Tsuya, Reiko Hayashi, Sam Hyun Yoo, Wen-Shan Yang, Yeonjin Lee, Yeung Wei-Jun Jean, Yoon-Jeong Shin, Yu-Hua Chen

Theme 5 Demographic Theory, Methods, and Data

Convener: Leiwen Jiang

Reviewer: Jianping Wang, Leiwen Jiang, Wei Chen

Theme 6 Gender, Youth and Population Ageing

Convener: Saito Yasuhiko

Reviewer: Aaron Hagedorn, Abhijit Visaria, Alan Feranil, Amit Kumar, Chi-Tsun Chiu, Chona Echavez, Choy Lye Chei, Chyong-fang Ko, Claire Berja, Elma Laguna, Emiko Takagi, Grace Cruz, Jeofrey Abalos, Josefina Natividad, Christian Joy P. Cruz, Md. Ismail Tareque, Maria Paz Marquez, Midea Kabamalan, Mira Hidajat, Saito Yasuhiko, Sandra Reynolds, Soon Hock Kang, Sureeporn Punpuing, Tuo-Yu Chen

Theme 7 Population, Economics, Environment, and Climate Change

Convener: Leiwen Jiang

Reviewer: Danan Gu, Erich Striessnig, Samir KC, Shah Md. Atiqul Haq, Susana Adamo, Yufen Tong

Theme 8 Education, Wellbeing, Disability, and others

Convener: Mohammad Jalal Abbasi-Shavazi, Paul Yip

Reviewer: Alaka Basu, Ann Goujon, Elke Loichinger, Hossein Mahmoudian, Samir KC, Santosh Jatrana

Theme 9 China population and development

Convener: Leiwen Jiang

Reviewer: Duan Chengrong, Jiang Quanbao, Wang Guangzhou, Zhang Zhen

Special workshop

Convener: Sureeporn Punpuing

National Organizing Committee

Honorary Chair	Donghan Jin, President of Shanghai University
Chair	Yong Duan, Vice president of Shanghai University
Vice Chair	Leiwen Jiang, Director, Asian Demographic Research Institute, Shanghai University
Members	Jinhong Ding, Director, Population Research Institute, China East Normal University
	Baochang Gu, Vice President, Asian Population Association
	Dan He, Director, China Population and Development Research Center
	Juan Li, Deputy Director, President Office, Shanghai University
	Xizhe Peng, Director, Center for Population and Development Policy Studies, Fudan University
	Kaifeng Qin, Deputy Director, President Office, Shanghai University
	Changmin Sun, President, Shanghai Population Association
	Jun Zeng, Director, Social Sciences Office, Shanghai University
	Xiaotian Zhang, Director, International Affair Office, Shanghai University
	Zhenwu Zhai, President, China Population Association
	Wenhong Zhang, Dean, School of Sociology and Politic Sciences, Shanghai University
	Haiwang Zhou, Deputy Director, Institute of Urban and Population Development Shanghai Academy of Social Sciences

Secretariat Team

Yuzhao Liu	Deputy Dean, School of Sociology and Politics Sciences, Shanghai University
Hao Yuan	Deputy Dean, School of Sociology and Politics Sciences, Shanghai University
Huijie Lai	Deputy Director, International Affair Office, Shanghai University
Yisheng Xu	Deputy General Secretary, School of Sociology and Politics Sciences, Shanghai University
Samir KC	Professor, Asian Demographic Research Institute, Shanghai University
Chen Chen	Post-doc, Asian Demographic Research Institute, Shanghai University
Qi Hu	Secretary General, Shanghai Population Association
Hong Wei	President Office, Shanghai University
Wuli Zhou	Social Sciences Office, Shanghai University
Fan Jie	Director of General Office, School of Sociology and Politics Sciences, Shanghai University
Yu Zhang	Administrator, Asian Demographic Research Institute, Shanghai University
Fenfang Xu	Administrator, School of Sociology and Politics Sciences, Shanghai University
Jiaolei Liu	Director of Student Affairs, School of Sociology and Politics Sciences, Shanghai University

Host

Shanghai University

Co-hosts

China Population Association

China Population and Development Research Center

Population Research Institute, East China Normal University

Center for Population & Development Policy Studies, Fudan University

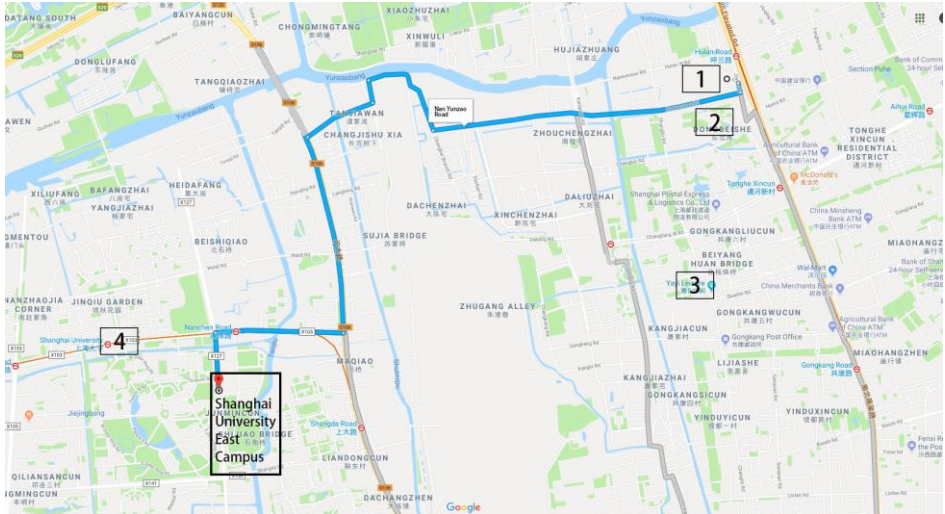
Shanghai Academy

Shanghai Academy of Social Science

Shanghai Population Association

Conference Information:

Locations of the conference hotels and venues



Note:

1. Baoshan Conference Center (for registration and plenary sessions)
2. Holiday Inn (conference hotel)
3. Ramada Encore (conference hotel)
4. New Lehu Building Hotel (conference hotel)
5. Shanghai University East Campus (for parallel sessions, special workshops, booth exhibitions)

Conference Hotels

➤ **Holiday Inn Express Shanghai Gongkang**

Address: No.9 South Wenzao Road, Shanghai, 200443, China
(上海市宝山区南蕰藻路 9 号)

➤ **Shanghai Ramada Encore Hotel**

Address: No. 555 Gongkang Road, Shanghai, 200443, China
(上海市宝山区共康路 555 号)

➤ **New Lehu Building Hotel**

Address: No. 99 Shangda Road, Shanghai, 200444, China
(上海市宝山区上大路 99 号)

Conference Venuses

➤ **Baoshan Conference Center**

Address: 458 Jiwen Road, Baoshan District, Shanghai, China
(上海市宝山区纪蕴路 458 号)

How to get there:

From *Holiday Inn Express Shanghai Gongkang*, it's about 3-minute walk.

From *Shanghai Ramada Encore Hotel*, conference shuttle buses are provided (see shuttle schedule at the reception desk).

From *Hongqiao Airport or Hongqiao Railway Station*:

By taxi: Time 60 mins / Cost 130 RMB

By Metro: Time 90 mins / Cost 6 RMB

Metro Line 10, change at Shaanxi South Road (陕西南路) to Line 1 (12 stops), and get off at Hulan Road (呼兰路 Exit No. 3)

From *Pudong Airport*:

By taxi: Time 90 mins / Cost 200 RMB

By Metro: Time 120 mins / Cost 8 RMB

Metro Line 2 (18 stops), change at People's Square (人民广场) to Line 1 (11 stops), and get off at Hulan Road (Exit No. 3)

From *Shanghai Railway Station*

By taxi: Time 30 mins / Cost 60 RMB

By Metro: Time 30 mins / Cost 4 RMB

Metro Line 1 (8 stops) and get off at Hulan Road (Exit No. 3)

➤ **Shanghai University, East Campus**

Address: 333 Nanchen Rd, Baoshan, Shanghai, China
(上海市宝山区南陈路 333 号)

How to get there:

From *Holiday Inn Express Shanghai Gongkang*

By Conference Shuttle: see schedule at the reception desk.

By Taxi: 20 minutes / Cost 30 RMB

From *Shanghai Ramada Encore Hotel*

By Conference Shuttle: see schedule at the reception desk.

By Taxi: Time 20 mins / Cost 30 RMB

From *Hongqiao Airport and Hongqiao Railway Station:*

By Taxi: Time 40 mins / Cost 70 RMB

By Metro: Time 80 mins / Cost 5 RMB

Metro Line 2 (7 stops), change at Jing'An Temple (静安寺) to Line 7 (11 stops), and get off at Nanchen Rd (南陈路 Exit No. 2)

From *Pudong Airport:*

By Taxi: Time 100 mins / Cost 220-250 RMB

By Metro: Time 90 mins / Cost 5 RMB

Metro Line 2 (7 stops), change at Jing'An Temple to Line 7 (11 stops), and get off at Nanchen Rd (Exit No. 2)

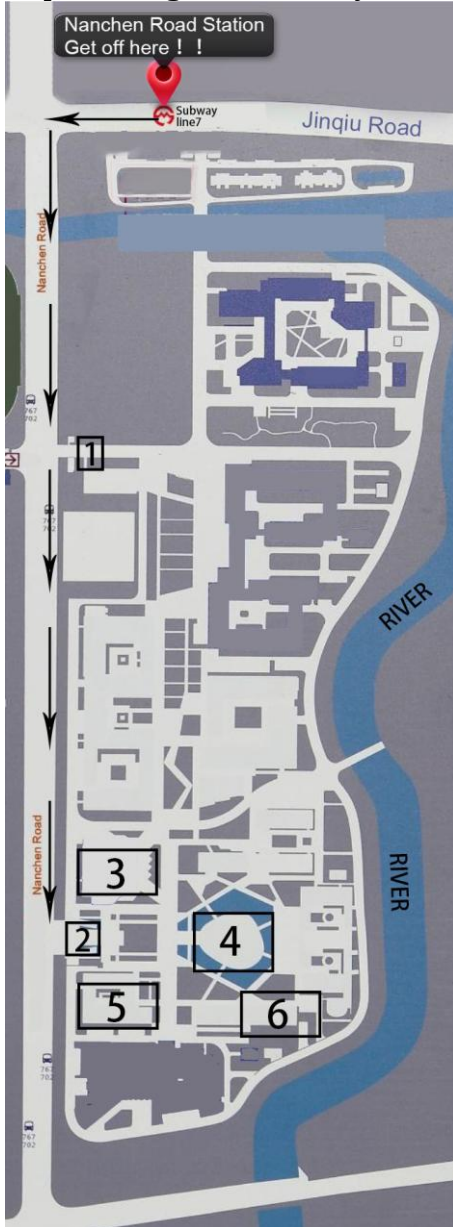
From *Shanghai Railway Station*

By Taxi: Time 35 mins / Cost 71 RMB

By Metro: Time 1hour and 10 mins /Cost 5 RMB

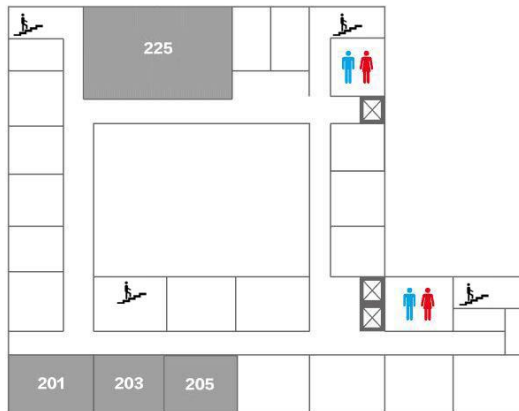
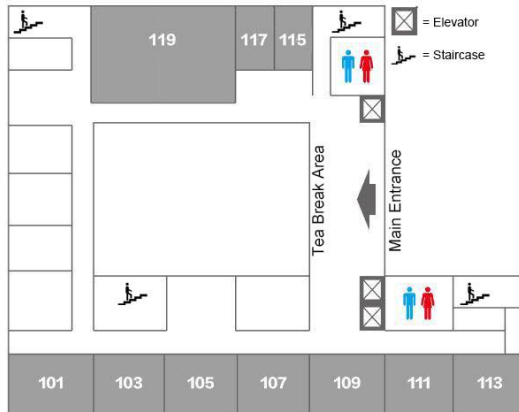
Metro Line 3/4 (2 stops), change at Zhenping Road (镇坪路) to Line 7 (8 stops), and get off at Nanchen Rd (Exit No. 2)

Map of Shanghai University, East Campus



1. West Gate
2. Southwest Gate
3. Cafeteria
4. Library
5. Graduate Building (GB)
6. Sociology Building

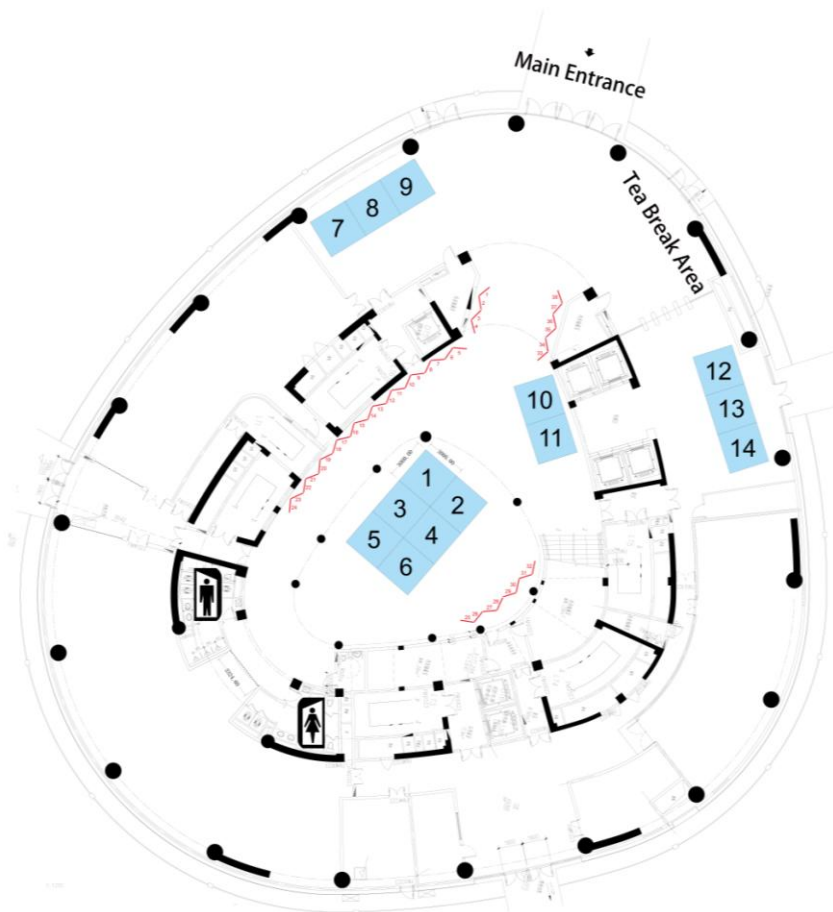
Floor map of Graduate Building (GB)



Note:

- Meeting rooms for regular sessions are: 101, 103, 105, 107, 109, 111, 113, 201, 203, 205
- Meeting room for special workshops: 119
- Work space: 115
- Preparation room: 117

Floor map of Library Exhibition Hall



Note:

- Box 1-14 are numbered exhibition booths;
- Posters are numbered along the sides of central area of the hall

Exhibitors

1. Asian Demographic Research Institute (ADRI)
2. The International Union for Scientific Studies of Population (IUSSP)
3. Asian MetaCentre for Population and Sustainable Development Analysis
4. China Population and Development Research Center
5. United Nations Population Fund
6. IPUMS Center for Data Integration
7. School of Sociology and Political Science (SSPS), Shanghai University
8. Chinese Journal of Sociology/ Chinese Sociology Review/Society
9. The School of Demography, Australian National University
10. Social Sciences Academic Press (China)
11. Beijing Elderly Care Facility Survey Program
12. Institute for Population and Social Research, Mahidol University
13. College of International Education, Shanghai University
14. Shanghai Academy

Sponsors

Shanghai University
China Population and Development Research Center
United Nations Population Fund
Shanghai Academy
Chinese Journal of Sociology
School of Sociology and Political Sciences, Shanghai University

Registration

The registration desk will be located by the entrance of Baoshan Conference Center and the entrance of Graduate Building on Shanghai University East Campus. **Please register on time.**

Opening Hours:

Baoshan Conference Center

Time: 13:00-16:30, Wednesday, July 11th 2018

Address: 458 Jiwen Rd, Baoshan, Shanghai (上海市宝山区纪蕴路 458 号)

Graduate Building, Shanghai University East Campus

Time: 7:30-12:15, Thursday, July 12th 2018

Address: 333 Nanchen Rd, Baoshan, Shanghai (上海市宝山区南陈路 333 号)

Work space

During conference hours, conference staff can be reached in Graduate Building Room (GBRM) 115. Conference participants will upload presentation slides and use computers to check email in GBRM 117.

Conference badge

Participants will receive a badge upon registration. Since your personal badge is your entrance ticket to the sessions, please make sure that **you wear your badge at all times during all conference activities and social events.**

Support staff

Conference support staff will wear a blue T-shirt with a logo of ADRI.

Internet access

Wireless Internet is available at the conference venue. Network name and password are printed on a flyer in your conference bag. You can also use "eduroam". There will also be several computers in GBRM 117 for quick email-checking.

Conference Website

Latest news and updates about the 4th APAC can be found in:
<https://apac2018.medmeeting.org/6831?lang=en>

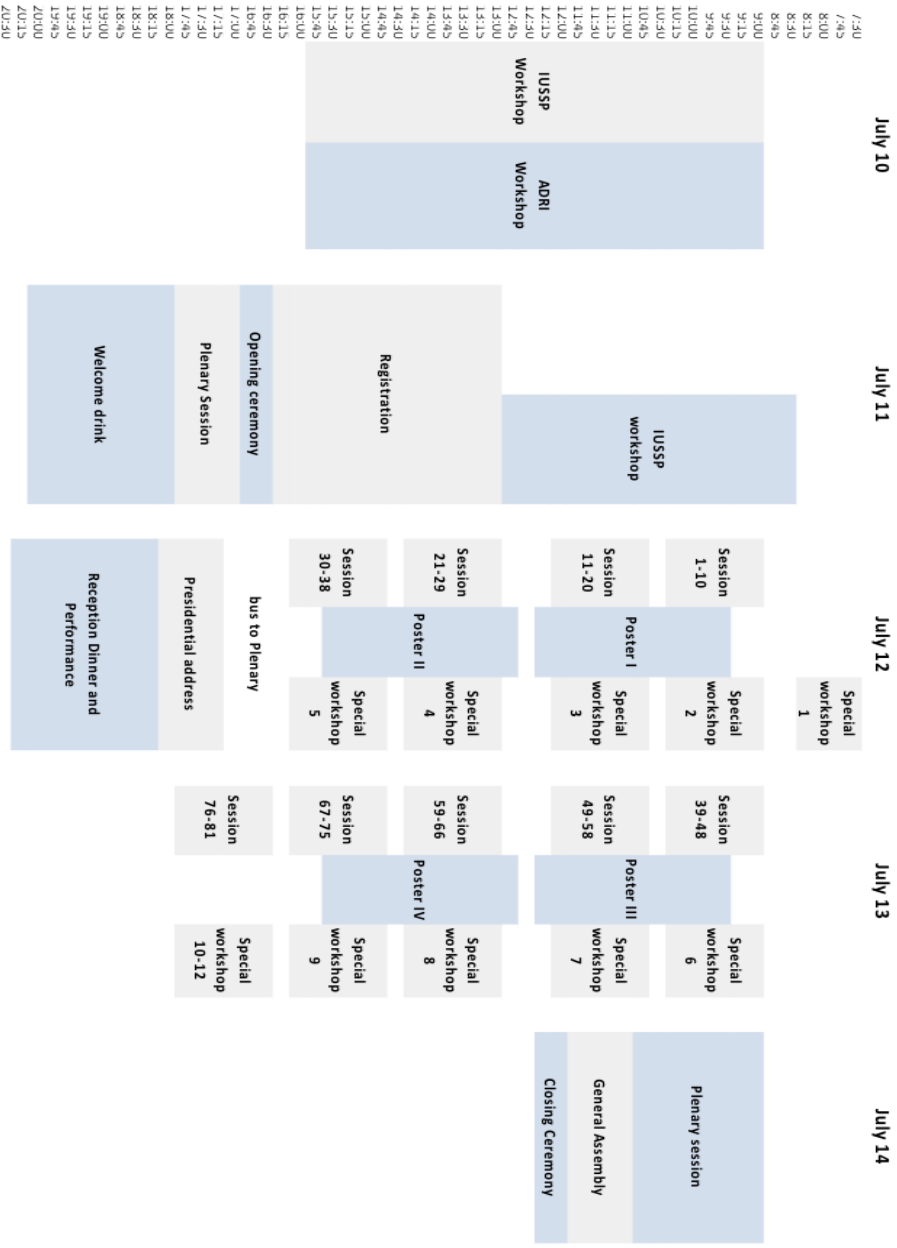
Welcome Drink, Reception Dinner, Lunch, Tea Breaks

Welcome drink will follow the opening ceremony at Golden Hall of Baoshan Conference Center on July 11, 2018. Reception dinner and performance is going to be held also at Golden Hall on the evening of July 12. On July 12-13, lunch will be provided free of charge at the cafeteria of Shanghai University East Campus. All participants will have lunch on the 1st floor of the Cafeteria, except those registered for vegetarian or halal food which will be served on the 3rd floor. Coffee, tea, and snack will be provided at both the first floor of Graduate Building and the Library Exhibition Hall during the breaks on July 12-13.

Information about Shanghai

General information about Shanghai can be found in conference website under "Conference". The webpage is:
<http://apac2018.medmeeting.org/Content/75631>

Scientific Program Overview



Plenary Sessions and Social Events

Wednesday, July 11th 2018

13:00 - 16:30	Registration	Golden Hall
16:30 - 17:00	Opening Ceremony	Golden Hall
	Official Opening and Welcome remarks	
17:00 - 18:00	Plenary Session I	
	Jane Menken: Thirty-Five Years Later: Long-term effects of the Matlab Maternal and Child Health and Family Planning Program	
	Shireen J. Jejeebhoy: The transition to adulthood in Asia: Keeping the promises of the SDGs for adolescents and youth	
18:00 - 20:00	Welcome drink	Golden Hall

Thursday, July 12th 2018

17:15 - 18:15	Presidential address	Golden Hall
18:15 - 20:30	Reception dinner and Performance	Golden Hall

Saturday, July 14th 2018

09:00 - 11:00	Plenary Session II	Metropolitan Hall
	Wolfgang Lutz: The Asian Century will be based on Human Capital	
	Sonalde Desai: Growing Indian Middle Class and Family Changes in India	
	Xizhe Peng: What Can China Learn From Other Asian Countries and Regions in Coping with Aging	

Zsolt Speder: Fertility intentions and realization in a comparative perspective: drivers and divides in low fertility context

11:00 - 12:00 The APA General Assembly

Metropolitan
Hall

12:00 - 12:30 Closing Ceremony

Metropolitan
Hall

Chronological List of Sessions

Wednesday, July 11th 2018

17:00-18:00 Plenary Session I

Thursday, July 12th 2018

09:00 - 10:30	1 - Adolescent reproductive health issues	GBRM 101
09:00 - 10:30	2 - Gender difference	GBRM 103
09:00 - 10:30	3 - Fertility trends in PR China	GBRM 105
09:00 - 10:30	4 - Well-being of older adults	GBRM 107
09:00 - 10:30	5 - Fertility trends in South Asia	GBRM 109
09:00 - 10:30	6 - Climate change and population	GBRM 111
09:00 - 10:30	7 - Migration and integration	GBRM 113
09:00 - 10:30	8 - Premarital sex, pregnancy and fertility	GBRM 201
09:00 - 10:30	9 - Internal migration	GBRM 203
09:00 - 10:30	10 - Youth issues	GBRM 205
09:30 - 12:30	Poster I	Library
10:45 - 12:15	11 - Gender differential in morbidity	GBRM 101
10:45 - 12:15	12 - Mortality inequality	GBRM 103
10:45 - 12:15	13 - Health care	GBRM 105
10:45 - 12:15	14 - Population projection	GBRM 107
10:45 - 12:15	15 - Population projection and demographic dividend	GBRM 109
10:45 - 12:15	16 - Demographic method	GBRM 111
10:45 - 12:15	17 - Education development and employment	GBRM 113
10:45 - 12:15	18 - Differential in migration	GBRM 201
10:45 - 12:15	19 - Migration data and technique	GBRM 203
10:45 - 12:15	20 - Unmet needs and contraceptive use	GBRM 205
12:45 - 15:45	Poster II	Library
13:00 - 14:30	21 - Mortality	GBRM 101
13:00 - 14:30	22 - Elderly and living arrangements	GBRM 103
13:00 - 14:30	23 - Subjective well-being of the older persons	GBRM 105

13:00 - 14:30	24 - Marriage migration and intermarriage	GBRM 107
13:00 - 14:30	25 - Chinese special session 1	GBRM 109
13:00 - 14:30	26 - Family, fertility and contraception	GBRM 111
13:00 - 14:30	27 - Education inequality	GBRM 113
13:00 - 14:30	28 - Long-term care of older adults	GBRM 201
13:00 - 14:30	29 - Chinese special session 2	GBRM 203
13:00 - 14:30	30 - Population ageing	GBRM 205
14:45 - 16:15	31 - Life chance and expectancy	GBRM 101
14:45 - 16:15	32 - Intergenerational contact, social policy, child labour	GBRM 103
14:45 - 16:15	33 - Fertility differentials in Southeast Asia	GBRM 105
14:45 - 16:15	34 - Family planning policy	GBRM 107
14:45 - 16:15	35 - Population economics	GBRM 109
14:45 - 16:15	36 - Maternal health and childbearing	GBRM 111
14:45 - 16:15	37 - Population and environment	GBRM 113
14:45 - 16:15	38 - Economics of ageing	GBRM 201

Friday, July 13th 2018

09:00 - 10:30	39 - Urbanization	GBRM 101
09:00 - 10:30	40 - Morbidity differential	GBRM 103
09:00 - 10:30	41 - Ageing and health	GBRM 105
09:00 - 10:30	42 - Fertility among immigrant populations	GBRM 107
09:00 - 10:30	43 - Adolescent reproductive health and education	GBRM 109
09:00 - 10:30	44 - Fertility differentials in Republic of Korea	GBRM 111
09:00 - 10:30	45 - Fertility transition	GBRM 113
09:00 - 10:30	46 - Migration decision	GBRM 201
09:00 - 10:30	47 - Cause of death	GBRM 203
09:30 - 12:30	Poster III	Library
10:45 - 12:15	48 - Migration and environment	GBRM 101
10:45 - 12:15	49 - Fertility issues in Asia	GBRM 103

10:45 - 12:15	50 - Economic inequality	GBRM 105
10:45 - 12:15	51 - Migration in Asia	GBRM 107
10:45 - 12:15	52 - Health related behaviours	GBRM 109
10:45 - 12:15	53 - Global Population Mobility	GBRM 111
10:45 - 12:15	54 - Gender inequality, education and policy	GBRM 113
10:45 - 12:15	55 - Family and migration	GBRM 201
10:45 - 12:15	56 - Burden of disease and health expenditure	GBRM 203
12:45 - 15:45	Poster IV	Library
13:00 - 14:30	57 - Health care for older adults	GBRM 101
13:00 - 14:30	58 - Gender and division of labor	GBRM 103
13:00 - 14:30	59 - Chinese special session 3	GBRM 105
13:00 - 14:30	60 - Martial status, work and family characteristics	GBRM 107
13:00 - 14:30	61 - Social cohesion and security	GBRM 109
13:00 - 14:30	62 - Mate selection and changing pattern of marriage	GBRM 111
13:00 - 14:30	63 - Effect of social factors on older adults	GBRM 113
13:00 - 14:30	64 - Migration and left-behind	GBRM 201
13:00 - 14:30	APA Special workshop 8: The changing European life-course	GBRM 119
14:45 - 16:15	65 - Policy and migration	GBRM 101
14:45 - 16:15	66 - Fertility intentions	GBRM 103
14:45 - 16:15	67 - Living arrangements and household structure	GBRM 105
14:45 - 16:15	68 - Choosing children: Quality and sex children	GBRM 107
14:45 - 16:15	69 - Analyzing policy challenges with real world data using IPUMS	GBRM 109
14:45 - 16:15	70 - Child health development	GBRM 111
14:45 - 16:15	71 - Reproductive health issues	GBRM 113
14:45 - 16:15	72 - Family planning and quality of care	GBRM 201

26

14:45 - 16:15	73 - Reproductive rights	GBRM 203
16:30 - 18:00	74 - IPUMS data used	GBRM 101
16:30 - 18:00	75 - Child health	GBRM 103
16:30 - 18:00	76 - Non-communicable disease	GBRM 105
16:30 - 18:00	77 - Reproductive and sexual health service	GBRM 107
16:30 - 18:00	78 - Ageing and gender	GBRM 109
16:30 - 18:00	79 - Young and older adults health	GBRM 111
16:30 - 18:00	80 - Maternal and child healthcare service	GBRM 113
16:30 - 18:00	81 - International Migration	GBRM 201

Saturday, July 14th 2018

09:00 - 11:00 Plenary session II

Metropolitan
Hall

Workshop and Special Workshop

Workshops

Tuesday, July 10th 2018

09:00 - 16:00	IUSSP Workshop: Bayesian small area estimation using complex survey data: Methods and applications	Lehu Hotel Siyuan Hall
09:00 - 16:00	ADRI Workshop: Modeling and projecting sub-national population in selected Asian countries: Dissemination and conclusion	Sociology Building RM 516

Wednesday, July 11th 2018

08:30 - 15:30	IUSSP Workshop: Bayesian small area estimation using complex survey data: Methods and applications	Lehu Hotel Siyuan Hall
---------------	----------------------------------------------------------------------------------------------------	---------------------------

Special Workshops

Thursday, July 12th 2018

07:30 - 08:30	Special workshop 1: Chinese translation of tools for demographic estimation (in Chinese)	GBRM 119
09:00 - 10:30	Special workshop 2: UNFPA session	GBRM 119
10:45 - 12:15	Special workshop 3: Changing age structure in Asia	GBRM 119
13:00 - 14:30	Special workshop 4: Low-fertility society: An Asia-Pacific perspective	GBRM 119
14:45 - 16:15	Special workshop 5: Unintended pregnancy and abortion in six states of India	GBRM 119

Friday, July 13th 2018

09:00 - 10:30	Special workshop 6: IUSSP Innovation on Longitudinal and Cross-National Surveys	GBRM 119
10:45 - 12:15	Special workshop 7: Research on Asia in the first half of the 21st century: reflections on the Routledge Handbook of Asian Demography and new directions for population research	GBRM 119
13:00 - 14:30	Special workshop 8: The changing European life-course	GBRM 119
14:45 - 16:15	Special workshop 9: Family law, public policy, and family behavior	GBRM 119
16:30 - 18:00	Special workshop 10: Gender, ageing and health in China	GBRM 203
16:30 - 18:00	Special workshop 11: The Generations & Gender Programme Regional Meeting	Sociology Building RM 308
16:30 - 18:00	Special workshop 12: Asian demography on crossroads: Future implications of demographic change	GBRM 119

Sessions

Wednesday, July 11th 2018

17:00-18:00 **Plenary Session I**

Keynote Speaker: Jane Menken, Institute of Behavioral Science (IBS), University of Colorado Boulder, USA; Shireen J Jejeebhoy, Director, Centre for Equity and Wellbeing, and VP, International Union for the Scientific Study of Population (IUSSP)

Thursday, July 12th 2018

09:00 - 10:30 **1 - Adolescent reproductive health issues** GBRM 101

Chair: Terrance Hull, Australian National University, Australia

356 | The Impact of Skills-based Intervention Program at Community Level on Perception of Gender Based Violence among Adolescents in Rural Bangladesh

E. Farzana Haque, Population Council, Dhaka, Bangladesh

1718 | Reproductive and Sexual Health of Adolescents: Evidence on Vulnerability and Inequities from India

K. Santhya, Population Council, New Delhi, India

1822 | Why Gender Transformative Programs on Contraceptive Use Should Focus on Early and Middle Adolescents? A Mix Method Study from Rural India

T. Khanna, MAMTA HEALTH INSTITUTE FOR MOTHER AND CHILD, Delhi, India

1830 | Why Ethnicity and Gender Matters

for Fertility Intention among Married Adolescents. A Baseline Evaluation from a Gender Transformative Intervention in Rural India

T. Khanna, MAMTA HEALTH INSTITUTE FOR MOTHER AND CHILD, Delhi, India

09:00 - 10:30 **2 - Gender difference** GBRM 103

Chair: Christian Joy Cruz, Population Institute, University of the Philippines, Philippines

514 | Association between Gender Inequality Index (GII) and GDP Per Capita: A Study of Cross-National Panel Data of 158 Countries

H. Ram, Jawaharlal Nehru University (JNU), New Delhi, India

1469 | The Geography of Intentional Homicide of Males and Females, Within and Out of the Family in Europe and North America (2003-2015)

G. Dalla-Zuanna, Dept. Statistical Sciences, Padova, Italy

475 | Gender Disparities in Health Care Financing Strategies for Inpatient Care in India

Moradhvaj, Jawaharlal Nehru University, New Delhi, India

1223 | Wage Differentials in the Indian Labour Market: Do Identities Matter?

S. Malhotra, Jawaharlal Nehru University, New Delhi, India

09:00 - 10:30 **3 - Fertility trends in PR China** GBRM 105

Chair: Zhongwei Zhao, Australian National University, Australia

331 | Evaluating the Impact of China's One-Child Policy: A Synthetic Control Approach

S. Gietel-Basten, The Hong Kong University of Science and Technology, Kowloon, Hong Kong

432 | Between Tradition and Modernity: the Driving Force of Chinese Fertility

M. Zhao, University of Pennsylvania, Philadelphia, USA

551 | Reproductive Behavior and Determinants in Low-Fertility Era in China

Z. Zheng, Chinese Academy of Social Sciences, Beijing, China

580 | Educational Differential in Fertility: An Overview of Fertility Changes in China

J. Niu, Institute of Population and Labor Economics, Chinese Academy of Social Sciences, Beijing, China.

888 | The Rising Influence of Education on Completed Fertility of Women in China

S. Tian, Peking University, Beijing, China

09:00 - 10:30 **4 - Well-being of older adults**

GBRM 107

Chair: Reiko Hayashi, National Institute of Population and Social Security Research (IPSS), Japan.

1245 | Dimensions and Predictors of Successful Ageing in Iran

N. Zanjari, Iranian Research Center of Ageing, University of Social Welfare and Rehabilitation Sciences, Tehran, Iran, Islamic Republic of.

1361 | Influence of Family Structure Changes on the Subjective Wellbeing of the Rural Elderly in China: A Longitudinal Study

J. Wang, School of Management, Xi'an University of Science and Technology, Xian, China

1453 | How Well Does Performance Predict Self-Reported Functioning in Europe? A Cross-Country Comparison among 14 European Countries Using SHARE Data.

M. Bilo, Dipartimento di Scienze Statistiche, Sapienza Università di Roma, Rome, Italy.

353 | Need for Caregivers of Older Persons at the Household Level in Thailand

P. Vapattanawong, Institute for Population and Social Research, Mahidol University, NakhonPathom, Thailand

09:00 - 10:30 **5 - Fertility trends in South Asia**

GBRM 109

Chair: Md Aminul Haque, University of Dhaka, Bangladesh

218 | Revising the Factors of Fertility Transition in Pakistan: An Analysis Based on Parity Progression Approach

S. Hussain, Population Council, Islamabad, Pakistan

497 | Spousal Age Gap and Fertility Behavior in India: Concordance and Discordance

H. Sahoo, International Institute for Population Sciences, Mumbai, India

755 | Understanding the Paradox of Fertility Transition and Contraceptive Decline in India

S. Chatterjee, International Institute for Population Sciences, Mumbai, India

992 | Economic Returns to Fertility

Decline in India (Analyzing the data from 2015-2100)

M. Siddiqui, Jawaharlal Nehru University,
New Delhi, India

1874 | Low Fertility in Urban India? An Investigation into One-Child Families of Kolkata City

T. Sekher, International Institute for
Population Sciences (IIPS), Mumbai, India

09:00 - 10:30 **6 - Climate change and population**

GBRM 111

Chair: Erich Striessnig, Wittgenstein Centre
for Demography and Global Human Capital
(IIASA, VID/ÖAW, WU), Austria.

215 | Transforming Cities of India: A Study of Linkages between Population Dynamics, Environment and Climate Change

A. Sikarwar, International Institute for
Population Sciences, Mumbai, India

1202 | An Analysis of Comfort Level based on Weather Conditions and Household Environment and its linkage with Health in India for Selected Districts

R. Baqtia Ahmad, Architect, Independent
consultant, Mumbai, India.

1255 | Explaining the Link between Education and Green Behavior in the Philippines: The Role of Knowledge and Climate Change Perception

R. Hoffmann, Wittgenstein Centre on
Demography and Global Human Capital,
Vienna, Austria

1808 | The Impact of Climate Change and Social-Economic change on Population

Distribution and Migration in China

H. Xia, East China Normal University,
shanghai, China.

09:00 - 10:30 **7 - Migration and integration**

GBRM 113

Chair: Aphichat Chamrathirong, IPSR,
Mahidol University, Thailand

316 | Measuring the Spatial Integration of the Chinese-born Population in Australia, 1981-2016

Q. Guan, Australian National University,
Canberra, Australia

728 | Self Perpetuating Survival Strategies and Social Segregation of Undocumented Cross Border Bangladeshi Migrants in Urban Ghettos of Kolkata, India

A. Siddhanta, International Institute for
Population Sciences, Mumbai, India

1204 | Investigating the Role of Social Support on Humanitarian Migrants' Health in Australia

S. Jatrana, Swinburne University of
Technology, Melbourne, Australia

1298 | Occupational Mobility and Sense of Belonging in Multicultural Australia: Findings from Indian and Chinese Communities

F. Guo, Macquarie University, Sydney,
Australia

1588 | Ruptures in Organization and the Social Integration of Taiwanese Colony in Mainland China

Y. Liu, Sociology Department, Shanghai
University, Shanghai, China

09:00 - 10:30 **8 - Premarital sex, pregnancy and fertility** GBRM 201

Chair: Feinian Chen, Department of Sociology,
University of Maryland , USA

**354 | The Role of Filipino Women's
Context of First Birth on their Fertility and
Socioeconomic Situation**

A. Florendo Ogena, United Nations
Development Programme, Quezon City,
Philippines.

**735 | Timing of Sexual Debut, Marriage
and Pregnancy among the Bicol Youth in
the Philippines**

A.Florendo Ogena, United Nations
Development Programme, Quezon City,
Philippines.

**1854 | Factors Influencing Having Sex
among Thai Youths**

P. Hunchangsith, Institute for Population and
Social Research, NakhonPathom, Thailand

09:00 - 10:30 **9 - Internal migration** GBRM 203

Chair: Aree Jampaklay, IPSR, Mahidol
University, Thailand

**145 | Long-Term Internal Migration
Trends in China: A Cohort Perspective**

A. Bernard, The University of Queensland,
Brisbane, Australia.

**505 | The Impact of Internal Migration on
Population Redistribution in Iran**

M. Abbasi-Shavazi, University of Tehran,
Tehran, Iran, Islamic Republic of.

**530 | A Longitudinal Study of Migration,
Religion and Mental Health in a Conflict
Area**

K. Ford, University of Michigan, Ann Arbor, USA.

588 | Rural-Urban Circularity of Migrants' Children in China: Analysis of Longitudinal Surveys in Sichuan and Anhui, 1980-2010

C. Chen, Asian Demographic Research Institute, Shanghai University, Shanghai, China

902 | Cohort Difference of Temporary Migration in China: a Machine Learning Approach in Population Dynamics

H. Zhang, Texas A&M University, College Station, USA.

09:00 - 10:30 **10 - Youth issues**

GBRM 205

Chair: Bhubate Samutachak, IPSR, Mahidol University, Thailand

1259 | Calculating Human Development Index for the Youth

G.L. Dasvarma, College of Humanities, Arts and Social Sciences' Flinders University, Bedford Park,, Adelaide, Australia

1531 | The Linkages between Witnessing and Experiencing Violence in Private and Public Spaces and Violence Related Attitudes and Behaviours among Adolescent Boys: Evidence from a Prospective Study in Rural Bihar, India

S. Basu, GIZ, New Delhi, India.

1546 | Time Use of Young People in Greater Jakarta

I.D. Utomo, Australian National University, Canberra, Australia.

1634 | Growing Up in Abusive Families and Mental Health Status of Married Youth

in India.

B. Chowdhury, International Institute for
Population Sciences, Mumbai, India

09:30 - 12:30 **Poster I**

Library
Exhibition
Hall
Poster No.

**425 | Knowledge, Practices and
Inhibitions around Menstruation among
the Females of Shivaji Nagar Slums,
Mumbai**

1

A. Mukherjee, Institute of Development
Studies, Kolkata, Kolkata, India

**608 | Breastfeeding in Skipped-
generation Households in Thailand**

2

K. Suttikasem, Institute for Population and
Social Research, Nakhonpathom, Thailand

**1508 | Correlates of Social, Demographic
and Behavioral Factors Affecting
Adolescent Sexuality in a Traditional
Society in India: Perspectives and
Challenges**

3

V. Kumar. Tiwari, National Institute of
Health and Family Welfare, New Delhi, India

**1070 | Application of Factor Analysis for
Measuring women's empowerment and
Determinant of Contraceptive Use for
India**

4

A. Verma, Banaras Hindu University,
Varanasi, India

**596 | The Transition of Fertility Desire
and Fertility Behavior of People in
Shanghai:1980-2016**

5

C. Rong, Shanghai Health Development
Research Center (Shanghai Medical

- Information Center), Shanghai, China
- 1203 | Has spending in National Health Mission Scheme Helped in Reducing Socio-economic Differences in Maternal Care in Rural India** 6
- R. Jain, National Council of Applied Economic Research, New Delhi, India.
- 53 | Inequality in NCD Expenditure in India** 7
- A. Biswas, International Institute for Population Sciences, Mumbai, India
- 208 | Effect of Maternal Micronutrients Supplementation on Infant Mortality in Nigeria: using 2013 Nigeria Demographic and Health Survey (NDHS)** 8
- L. Ugonna Umesi, National Research University- Higher School of Economics, Moscow, Russian Federation
- 562 | Effect of Health Insurance on Hospitalization and Health Care Spending in India** 9
- P. Khan, International Institute for Population Sciences, Mumbai, India
- 1722 | The Expectation of Life Without Disability in Sri Lanka** 10
- M. Weeratunga, University of Colombo, Colombo, Sri Lanka
- 940 | Role of Adult Mortality in Inequality in Age-at-Death** 11
- M. Alagarajan, International Institute for Population Sciences, Mumbai, India
- 232 | Role of Feeding Practices among Children and its Influence on Nutritional Status and Morbidity of Children in Selected South Asian Countries** 12

Brajesh, International Institute for
Population Sciences, Mumbai, India.

**420 | Does the 'Productivist Paradigm'
Dominate Policy Making in China? An
Analysis of the Changes to Social Policy
Concerning Internal Migrants** 13

Y. Zhang, University of Oxford, Oxford,
United Kingdom

**1109 | Migration for Partnerships of Thai
Gay Men and Transgender Women with
Westerners** 14

N. Darawuttimaprakorn, Institution for
Population and Social Research, Nakhon
Pathom, Thailand.

**33 | The Growing Number and Size of
Towns/cities in India: Emerging Issues
from 2011 Census Data** 15

K. Chandra. Das, International Institute for
Population Sciences, Mumbai, India.

**170 | Emerging Pattern of Internal labour
Migration in India: Exploring Causes and
Role of Social Network** 16

B. Das, Jawaharlal Nehru University, New
Delhi, India

**101 | Changing Pattern of Marriage
among Tribal in North East India** 17

R. Jeermison, Oriental College
(Autonomous), Imphal, India.

**384 | Survey of Roles, Responsibilities,
Problems and Needs of Guardians in
Controlling Risk Behavior among Young
Adolescents in their Care** 18

K. Apipornchaisakul, Institute for Population
and Social research Mahidol University
Salaya, Nakhon Pathom, Thailand.

- 441 | Love, Desire, and Norms: Premarital Cohabitation as Adaptational Strategies for Urban Chinese Migrant Youth** 19
I. Zhao, Department of Sociology, Peking University
- 120 | Determinants of Intimate Partner Violence (IPV) in Bihar, India - Experiences from District Level SWASTH Survey (DLSS 2015-16)** 20
J. Kumar Basu, TRIOs Development Support Pvt. Ltd., Kolkata, India
- 1523 | What Does the 2010 Census Tell Us about Thai-foreigner Partnership?** 21
D. Phuengsamran, Institute for Population and Social Research, Nakhon Pathom, Thailand
- 691 | Asian Demography in Context** 22
Y. Xu, Shanghai University, Shanghai, China
- 1243 | Consistent Population Scaling for Integrated Assessment of Environmental Change-Spatial Population Projections for the US States Based on Gridded Population Datasets** 23
L. Jiang, Asian Demographic Research Institute of Shanghai University, Shanghai, China.
- 346 | Has Thailand Become To The Edge At Which Guardianship System Is Needed?** 24
J. Rittirong, Institute for Population and Social Research, Mahidol University, Nakhorn Pathom, Thailand
- 385 | When Far from Home: How Do Members of Skipped-Generation Households Stay in Contact** 25

- K. Thianlai, Institute for Population and Social research Mahidol University Salaya, Nakhon Pathom, Thailand
- 386 | Exchanges Between Migrants and Their Parents in Skip-Generation Families** 26
- W. Hutaphaed, Institute for Population and Social research Mahidol University, Nakhon Pathom, Thailand
- 589 | Determinants of Women Empowerment in Rural Nepal** 27
- R. Sharan Pathak, Central Department of Population Studies, TU, Kathmandu, Nepal.
- 1122 | Socioeconomic Patterns of Muscle Strength among Older Adults in India and China: Evidence from WHO-SAGE** 28
- Y. Selvamani, International Institute for Population Sciences (IIPS), Mumbai, India
- 657 | Predictors for Youth NEET in Mongolia: Evidence from Labor Force Survey-2016** 29
- E. Ulziisuren, London School of Economics, London, United Kingdom
- 1526 | A Disaggregated Analysis of Child Nutrition Indicators in WHO-SEAR Nations: Assessment of the Challenges for SDG Nutrition Targets** 30
- T. Kumar Chakrabarty, North Eastern Hill University, SHILLONG, India
- 192 | Assessment of India's Demographic Dividend** 31
- S. Chauhan, International Institute for Population Sciences, Mumbai, India
- 1613 | Gendered Dependence and Management of Forest Commons of** 32

Gahrwal, India

S. Narayan Sidh, Government Degree College,
Gairsain Chamoli, India

- 816 | Women's Participation in the Labor Force in Iran: Challenges and Policy Implications** 33

H. Razeghi Nasrabad, National Population Studies and Comprehensive Management Institute, Tehran, Iran, Islamic Republic of

- 934 | The Health Impact of Child Labor in Developing Countries Evidence from Egypt** 34

A. Ahmed Abdelwahed, Shanghai university, shanghai, China

- 37 | Concordance and Discordance in Reporting Ideal Family Size by the Couples in India** 35

K. Das, Pillai College of Arts, Science and Commerce, Navi Mumbai, India.

- 38 | Reliability in Wife's Reporting of Husband's Age and Education in India: Empirical Evidence from a Large Scale Survey** 36

K. Das, Pillai College of Arts, Science and Commerce, Navi Mumbai, India.

- 686 | Intergenerational Transmission of Height in India** 37

K. Kumar, International Institute for Population Sciences, Mumbai, India

- 1713 | Inter-State Analysis of Growth, Disparities and Linkages of Secondary Education in India** 38

C. Jain, National Council of Applied Economic Research, Delhi, India.

10:30 - 10:45 **Break**

10:45 - 12:15 **11 - Gender differential in morbidity** GBRM 101

Chair: Zheng, Zhenzhen, Chinese Academy of Social Sciences, China.

1153 | What Contributed to the Large Sex Differentials in Lifespan Variation and Life Expectancy in South Korea

A. Singh, Université catholique de Louvain, Louvain-la-neuve, Belgium

1562 | Sex Differentials of Non-Communicable Diseases in Sri Lanka: Men Over 45 Years of Aged in Colombo District

H. Jayarathne, University of Colombo, Colombo, Sri Lanka

1790 | Gender Differences in Prevalence of Non-Communicable Diseases and Disability among Older People in Sri Lanka: Socioeconomic and Health Implications

E. Perera, University of Colombo, Colombo, Sri Lanka

10:45 - 12:15 **12 - Mortality inequality** GBRM 103

Chair: Zhongwei Zhao, Australian National University, Australia

90 | Maternal Mortality in Selected Provinces in Afghanistan (2010-2013)

L. R. Wong, CEDEPLAR, Belo Horizonte, Brazil.

1043 | Determinants of Mortality Transition in Bangladesh: An Autoregressive Distributed Lag Model

M. Zakiul Alam, University of Dhaka, Dhaka,

Bangladesh

1675 | Union Status as a Predictor of Mortality Risk: An Eleven-Year Follow-up Study in Thailand

J. Zhao, Shanghai University, Shanghai, China.

1856 | Infant Mortality in Indian Districts: Does the Presence of SC & ST People Matter?

J. Kumar Bora, Indian Institute of Dalit Studies, New Delhi, India

1789 | Inequality in Age Specific Mortality Trends in India During 1973-2010 and its Patterning by Gender, Residence and States

A. Sengupta, Department of Management, Bengaluru, Amrita Vishwa Vidyapeetham, Bangalore, India.

10:45 - 12:15 **13 - Health care**

GBRM 105

Chair: Wan He , U.S. Census Bureau, USA

451 | Continuity in Utilisation of Maternal Healthcare Services in India: Exploring the Role of Space

M. Dutta, Economics Department, Presidency University, Kolkata, India.

534 | Individual and Socioeconomic Determinants of Quality of Antenatal Care in India: A cross-sectional study

L. Singh, National Institute of Medical Statistics (NIMS), Indian Council of Medical Research (ICMR), New Delhi, India.

1158 | Following the Peers: The Role of Social Networks for Health Care Utilization in the Philippines

R. Hoffmann, Wittgenstein Centre on

Demography and Global Human Capital,
Vienna, Austria

1501 | Inequality of Catastrophic Health Expenditure due to Non-Communicable Diseases (NCDs) in India, its Decomposition and Changes across a Decade (2004-2014)

M.N. Ambade, International Institute for Population Sciences, Mumbai, India.

10:45 - 12:15 **14 - Population projection**

GBRM 107

Chair: Sergei Scherbov, Wittgenstein Centre for Demography and Global Human Capital (IIASA, VID/ÖAW, WU), International Institute for Applied Systems Analysis (IIASA), Austria.

529 | Forecasting Mortality Using Statistical Moments

M. Pascariu, University of Southern Denmark, Odense, Denmark

798 | A Bayesian Hierarchical Model to Estimate and Forecast Child Labour Supply in India

W. Olsen, CMIST, University of Manchester, Manchester, United Kingdom

870 | Bayesian Forecasting of Subnational Population Change in Australia

A. Wiśniowski, University of Manchester, Manchester, United Kingdom.

1042 | Application of Bayesian Hierarchical Model in Probabilistic Population Projections

A. Singh, University of Allahabad, Allahabad, India.

10:45 - 12:15 **15 - Population projection and demographic dividend** GBRM 109

Chair: Zhuoyan Mao, China Population and Development Research Center, China.

360 | Uncertainty and Complexity of Demographic Dividend: Comparative Study between China and Japan

Y. Liang, China Population and Development Research Center, Beijing, China

417 | The Readiness of Indonesian Young People for Demographic Dividend : The Capture of Premarital Sex

T. Agustin, The Indonesian Central Bureau of Statistics (BPS), Jakarta, Indonesia

1364 | Spatial Projections of Age-Structured Populations

E. Striessnig, Wittgenstein Centre for Demography and Global Human Capital (IIASA, VID/ÖAW, WU), Vienna, Austria.

1405 | Modeling Spatiotemporal Relationships Between Built-Up Land Development and Population Change under the Shared Socioeconomic Pathways (SSPs)

J. Gao, National Center for Atmospheric Research, Boulder, CO, USA

10:45 - 12:15 **16 - Demographic method** GBRM 111

Chair: Ding Jinhong, East China Normal University, China

228 | The Mekong Integrated Population-Registration Areas of Cambodia (MIPRAoC) project: A health and demographic surveillance system in rural

Cambodia

P.C. Heuveline, University of California, Los Angeles, USA.

434 | Estimating Multi-Regional Survivorship Probabilities for Sparse Data: An Application Migrant Populations in Australia, 1981-2011

B. Baffour, Australian National University, Canberra, Australia

844 | Estimating HIV Prevalence for Survey Non- Participation Using Heckman Selection Model in India

S. Srivastava, International Institute for population Sciences, Mumbai, India

1304 | Assessment of the Own-Children Estimates of Fertility Applied to the 2011 and 2016 Iran Censuses

M. Abbasi-Shavazi, University of Tehran, Tehran, Iran, Islamic Republic of.

1765 | Modeling of Family Resilience Index With Structural Equation Modeling Approach: A Case Study of Release-Family Resilience Index Data 2015, Indonesia

R. Agustina, University of Indonesia, Jakarta, Indonesia.

10:45 - 12:15

17 - Education development and employment

GBRM 113

Chair: Samir KC- Asia Demographic Research Institute (ADRI), China / Discussant: Anne Goujon

19 | Female Employment in India: An Anatomy of Choice

S.R. Mahapatro, A.N. Sinha Institute of Social Studies, Patna, India

515 | Intergenerational Educational Mobility in Uttar Pradesh (India): Are there any differences across the *Caste* Groups and how much it effecting Employment and Economic Outcomes?

H. Ram, Jawaharlal Nehru University (JNU),
New Delhi, India

581 | The Implication of Educational Expansion on Development of Population Education: Evidences from China

J. Niu, Institute of Population and Labor Economics, Chinese Academy of Social Sciences, Beijing, China.

859 | The Education-Occupation Nexus: Examining Inter and Intra-Generational Mobility Using India Human Development Survey (Round 1 and 2)

N. Ray, Washington State University,
PULLMAN, USA.

10:45 - 12:15 **18 - Differential in migration**

GBRM 201

Chair: Malee Sunpuwan, IPSR, Mahidol University, Thailand

258 | The Developmental Effects of Migration and Remittances: Experiences of China's Coastal Areas

Y. Zhu, Asian Demographic Research Institute, Shanghai University, Shanghai, China;
Center for Population and Development Research, Fujian Normal University, Fuzhou, China

488 | Cross National Comparisons of Internal Migration Flows by Marital Status and Gender

N. Heo, Asian Demographic Research

Institute, Shanghai University, Shanghai,
China

**533 | Gender Roles and Migration in the
Context of Unrest: The Three
Southernmost Provinces of Thailand**

A. Jampaklay, Institute for Population and
Social Research Mahidol University, Nakhon
Pathom, Thailand.

**1310 | Step-Wise Migration: Evidence from
Indonesia**

E.L. Pardede, Population Research Centre,
Faculty of Spatial Sciences, University of
Groningen, Groningen, Netherlands.

10:45 - 12:15 **19 - Migration data and technique** GBRM 203

Chair: Li Shuzhuo, Xi'an Jiao tong University,
Xian, China.

**253 | Asia Pacific Migration: Strategy for
Overcoming the Problems of Missing and
Inconsistent Flow Data**

J. Raymer, Australian National University,
Canberra, Australia

**632 | Interpreting the Complex System of
Chinese Interprovincial Migration Flows: a
Spatial Dynamic Panel Data Modeling
Approach**

X. Zhao, Nanjing University, Nanjing, China

**753 | Estimating the Existing Inequalities
in Urban Infrastructures and Services
Through the Urban Exposure Level in
Million-Plus Cities in India**

S. Kumar Patel, International Institute For
Population Sciences, Mumbai, India

**765 | Probabilistic Method for Combining
Internal Migration Data**

G. Abel, Asian Demographic Research
Institute, Shanghai University, Shanghai,
China.

10:45 - 12:15 **20 - Unmet needs and contraceptive use** GBRM 205

Chair: Bussarawan Teerawichitchainan,
School of Social Sciences, Singapore
Management University, Singapore,

**619 | Unmet Need for Family Planning
among Young Currently Married Women
in Nepal**

K. Lamichhane, Central Department of
Population Studies, TU, Kathmandu, Nepal.

**1805 | Unmet Need for Family Planning
among Muslims: A Comparative Analysis
across Urban and Rural settings in Asian
Countries**

T. Reja, International Center for Research on
Women, South Delhi, India

**70 | Use of Contraception in India:
Incongruence and Differentials in
Reporting by the Couples**

K. Das, International Institute for Population
Sciences, Mumbai, India

**1294 | Male Contraceptive Methods:
Trend, Prevalence and its determinants in
Tehran**

F. Modiri, National Population Studies and
Comprehensive Management, Tehran, Iran,
Islamic Republic of.

12:15 - 13:00 **Lunch**

12:45 - 15:45 **Poster II**

Library
Exhibition
Hall

- 956 | A Study on the Difference of Fertility Intention Under the Coordinated Development of Beijing - Tianjin - Hebei Region** 1
J. Zhang, Beijing Administrative College, Beijing, China
- 1224 | Planning of births and RMNCHN Outcomes: Recent Evidence from India** 2
M. Rana, Jawaharlal Nehru University, New Delhi, India
- 1215 | Do National Safe Motherhood Programs Really Have an Impact on Childhood Immunisation Rates in India?** 3
R. Jain, National Council of Applied Economic Research, New Delhi, India.
- 387 | Contraception, Abortion and Strategy to Reduce Risk of Abortion in China** 4
Y. Che, Shanghai Institute of Planned Parenthood Research, Shanghai, China
- 543 | Effect of PAFP Intervention on Immediately Use of Contraceptive Methods After an Abortion in China: A Cluster Randomized Controlled Trial** 5
J. Zhang, School of Public Health, Fudan University, Shanghai, China.
- 784 | Does Use of Solid Fuels for Cooking Contribute to Childhood Stunting? A Longitudinal Data Analysis from Low and Middle-Income Countries** 6
A. Kumar Upadhyay, International Institute for Population Sciences, Mumbai, India.
- 1386 | Revisiting Child Malnutrition (1992-93 to 2005-06): Epidemiology of** 7

Child Undernutrition in Northeast India

K. Dinachandra Singh, International Institute for Population Sciences, Mumbai, India

1631 | Health Seeking Behavior, Expenditure and Burden of Kala-azar: A Case from an Indian District 8

D. Govil, International Institute for Population Sciences, Mumbai, India

207 | Exploring Regional Heterogeneity of Non-communicable Disease (NCD) Burden in India 9

A. Shil, International Institute for Population Sciences, Mumbai, India

721 | Leaving Children Behind: A Negotiation for the Sake of Children and Family 10

K. Tangchonlatip, Institute for Population and Social Research, Mahidol University, Nakhon Pathom, Thailand

865 | Urbanization and Changing Demographic Scenario in the Indian Context, 2001-2011 11

D. Gupta, International Institute for Population Sciences, Mumbai, India

611 | Change or Maintain: Marriage Attitudes and Mate Selection Strategies of Rural Older Males from the Perspective of Marriage Squeeze 12

H. Qi, Xi'an Polytechnic University, Xi An, China

912 | Intergenerational Relation Structure in Contemporary Rural China: The role of Intergenerational Interactions and Urbanization 13

Y. Cui, Xi'an Jiaotong University, Xi'an, China.

1272 | Psychological Functioning among 14

Older Thai People: Contextual & Structural Factors

S. Punpuing, Institute for Population and Social Research, Mahidol university, Nakhonpathom, Thailand.

44 | Spatial Pattern and Factors Influencing Inter-Caste Marriages in India 15

K. Das, Pillai College of Arts, Science and Commerce, Navi Mumbai, India.

216 | Why the Widowed Women under the Coverage of Tehran Imama Khomeini Relief Foundation- District 14 Aged 20-45 don't get Married in 2016 16

A. Pezhhan, Islamic Azad University central Tehran Branch, Tehran, Iran, Islamic Republic of.

223 | Examination of Quality of Sample Registration System Data on Mortality in India and Major States 17

A. Kumar Yadav, IIPS, Mumbai, India

182 | Factors Affecting Discordance between Self-reported and Measured Data on Diabetes in Demographically Developed States of India 18

P. Puri, International Institute for Population Sciences, Mumbai, India

597 | Missing Women in STEM in China: A Micro-Level Explanation from Achievement Motivation and Gender Socialization 19

C. Gao, The Institute for Population and Development Studies, Xi'an Jiaotong University, Xi'an, China

715 | A Study of Sleep Problems, Quality of Life and Physical function among adults in 20

six low and middle-income countries

R. Rani, International Institute for Population Sciences, Mumbai, India

862 | Gender System, Social Change and Reproductive Autonomy among Tribes: A Case Study of the Reang Tribe of India 21

A. Sinha, Tripura University, Agartala, India

222 | Understanding the Role of Marital Status and Motherhood in Agency and Gender Role Attitude among Adolescent Girls in Bihar, India 22

S. Basu, GIZ, New Delhi, India.

914 | A Study on the Influence of Social and Economic Status on Healthy Life Expectancy of Elderly Population 23

H. Xue Wang, Fudan University Center for Population and Development Policy Studies, Shanghai, China

851 | How Far Gender Promotion Programs Influence Family Decisions? Study of a Conditional Cash Transfer (CCT) Program for Empowering Girls in India 24

T. Sekher, International Institute for Population Sciences (IIPS), Mumbai, India

298 | Monitoring the Progress of United Nation's Sustainable Development Goals: An analysis of Real World Policy Challenges using Harmonized Microdata 25

S. Sarkar, University of Minnesota, IPUMS Center for Data Integration, Minneapolis, USA

559 | Socioeconomic Patterning of Overweight and Obesity between 1998 and 2015: Evidence from India 26

S. Luhar, London School of Hygiene and Tropical Medicine, London, United Kingdom

	55
1035 Application of Bayesian Inference for Probabilistic Population Projection	27
A. Verma, Banaras Hindu University, Varanasi, India	
1681 Spatial and Temporal Pattern of Human Development in India	28
S. Chatterjee, International Institute for Population Sciences, Mumbai, India	
1518 Employment, Occupations and Social Exclusion in Nepal	29
B. Aryal, Agriculture and Forestry University, Chitwan, Nepal.	
901 Small Area Population Projection of Bangkok, Thailand during 2015 - 2040	30
P. Vapattanawong, Institute for Population and Social Research, Mahidol University, NakhonPathom, Thailand.	
938 Women Knowledge and Practices of Diarrhoea Treatment among Children Under Five in Northeast India?	31
S.P. Marbaniang, International Institute For Population Sciences, Mumbai, India	
142 Estimation of the Effect of Population Age-sex Structure Changes on Labor Force Supply in Iran	32
N. Motie Haghshenas, National Population Studies Institute, Tehran, Iran, Islamic Republic of	
908 社会经济因素对我国老年人死亡风险影响的 Cox 模型分析	34
K. Ning, Institute of Population Research, Peking University, Beijing, China	
1024 Groom Family, Bride Worth and Marriage Match—The Influential Factors	35

and Changes of the First Wedding Bride in China (1950-2014)

L. Manli, Sun Yat-Sen University, Guangzhou, China

1239 | Spatial and Temporal Distribution of Chinese Family Structure and its Influencing Factors 36

Y. Jiao, Nanjing University of Posts and Telecommunications, Nanjing, China

1337 | 中国出生性别比的变化——基于省级层面的因素分解 37

Ting Ge, Xi'an Jiaotong University, Xi'an, China

1736 | 在沪女大学生婚育观研究：也谈家庭结构的重要性 38

J. Ma, Shanghai University, Shanghai, China

13:00 - 14:30 **21 - Mortality** GBRM 101

Chair: Nai Peng Tey, University of Malaya, Malaysia.

427 | The impact of Mortality on Pension Funds' Revenues by Causes of Death in Iran: in case of Social Security Fund (using multiple life table method)

M. Koosheshi, University of Tehran, Tehran, Iran, Islamic Republic of

1309 | Factors Attributable to Urban-rural Difference in Mortality among Older Adults in China

Y. Zhao, Nanjing Normal University, Nanjing, China.

1397 | Risks of Death at Oldest Ages: A Birth Cohort Analysis on French, Belgian and French-Canadian Population

L. Hoang Khanh. Dang, Institut National d'Études Démographiques (INED), Paris, France.

13:00 - 14:30 **22 - Elderly and living arrangements** GBRM 103

Chair: Chun-Hao Li, Yuan Ze University, Taoyuan, Taiwan. Academia Sinica, Taiwan.

778 | A Longitudinal Analysis of Intergenerational Support on Psychological Well-being of Rural Elderly

Y. Rui,
Xi'an University of Science and Technology,
Xi'an, China

790 | Childlessness and Aging Alone: Comparative Perspectives from East and Southeast Asia

B.P. Teerawichitchainan, School of Social Sciences, Singapore Management University, Singapore, Singapore.

817 | Exploring Associations between Family Building Behaviors and Loneliness in Early Adulthood

Y. Chen, National Taiwan University, Taipei, Taiwan.

1540 | Living Alone in Later Life: A Comparative Global Analysis

D. Reher, Universidad Complutense de Madrid, Madrid, Spain.

13:00 - 14:30 **23 - Subjective well-being of the older persons** GBRM 105

Chair: Santosh Jatrana, Swinburne University of Technology, Australia

264 | Emotional Well-being in Old Age in China: The Relative Importance of Income

and Health

S. Xiao, University of Malaya, Kuala Lumpur, Malaysia.

431 | Does Development Lead to Happiness?

K. Shanker Kanaujiya, University of Lucknow, lucknow, Lucknow, India

1066 | Factors Associated with Subjective Well-Being in Chinese Elderly People

J. Liang, Zhongnan University of Economics and Law, Wuhan, China

1012 | Elderly Wellbeing in India: Regional Variation and Determinants

B. Das, Jawaharlal Nehru University, New Delhi, India.

1330 | The Influence of Religion on the Subjective Well-Being of the Elderly in Rural China

P. Liu, Suzhou University, Suzhou, China.

13:00 - 14:30

24 - Marriage migration and intermarriage

GBRM 107

Chair: Laura Wong, CEDEPLAR, Belo Horizonte, Brazil

607 | Asian Intermarriage in Australia

A. Evans, Australian National University, Canberra, Australia

882 | The Implications of Demographic Change for Asian Marriage Markets, 2010 - 2050

Y. Cheng, Institute of Sociology, Academia Sinica, Taipei, Taiwan.

1103 | A Qualitative Exploration of Thai-Westerner Partnerships: A Trade-off

Situation

D. Phuengsamran, Institute for Population and Social Research, Nakhon Pathom, Thailand.

1532 | Marriage-migration in India: An Assessment of Changing Patterns and Driving Factors

S. Chakravorty, Jawaharlal Nehru University, Delhi, India

13:00 - 14:30 **25 - Chinese special session 1** GBRM 109

Chair: Hongyan Liu, China Population and Development Research Center, Beijing, China.

910 | Research on Dual Disadvantage of the Income of Elderly Women in Urban Area of China

H. Yang, Women's Studies Institute of China, All-China Women's Federation, Beijing, China.

1067 | 丧偶后再婚与中老年期健康

X. Li, School of Management, Xi'an polytechnic University, Xi'an, China.

1335 | 中国出生人口数量变化——一个分解

S. Yang, Institute for Population and Development Studies, Xi'an, China

1371 | 家庭资源、新型通讯工具对渔农村二代女性返乡创业的影响：基于舟山群岛民宿业的实证研究

S. Zhou, The Chinese University of Hong Kong, Hong Kong, China

13:00 - 14:30 **26 - Family, fertility and contraception** GBRM 111

Chair: Hossein Mahmoudian, NIPR, University of Tehran, Iran/ Discussant: Gavin Jones,

Australian National University, Australia

1249 | Population Policies and their Impact on Contraceptive Use in Bangladesh and Pakistan

M.S. Karim, Center for Studies in Population & Health, Malir University of Science & Technology, Karachi, Pakistan

774 | Assessment on Determinants of Contraceptive Morbidity in Northeast India

P. Kumar Narzary, International Institute for Population Sciences, Mumbai, India.

1193 | Correlates of the Use of Family Policy Measures in Japan and Korea: Comparative Analysis of the 2005 and 2009 Survey Data

H. Kojima, Waseda University, Tokyo, Japan

1346 | Women's Education and Completed Cohort Fertility in Iran

M. Hosseini-Chavoshi, ARC Centre of Excellence in Population Ageing Research, University of Melbourne and The Australian National University, Melbourne, Australia.

13:00 - 14:30 **27 - Education inequality**

GBRM 113

Chair: Md Aminul Haque, University of Dhaka, Bangladesh

483 | Variation in Gender Disparities in School Education Across Socio-Religious Communities: An Analysis of the Inequality in Educational Process in India

M. Dutta, Economics Department, Presidency University, Kolkata, India.

827 | Changing Trend in Literacy, Level of Higher Education and Reasons for Drop

Out: A Study on a Socially Deprived Section in India

H. Sahoo, International Institute for Population Sciences, Mumbai, India

890 | Education in Greater Jakarta

I.D. Utomo, Australian National University, Canberra, Australia.

923 | School Completion and Learning Outcomes: Has the Gender Gap Narrowed in India?

K. Santhya, Population Council, New Delhi, India

1150 | Challenges to Meeting the SDG Targets of Universal Upper Secondary Education in China

W. Yingji, Asian Demographic Research Institute, Shanghai University, Shanghai, China

13:00 - 14:30 **28 - Long-term care of older adults** GBRM 201

Chair: Laishram Ladusingh, International Institute for Population Sciences (IIPS), India

312 | Positive and Negative Aspects of Caregiving for Older Persons and Family Caregivers' Subjective Well-being in Thailand

R. Gray, Institute for Population and Social Research, Mahidol University, Nakhon Pathom, Thailand

963 | Understanding the Role of Elderly as a Family Caregiver: A Study Based on WHO-SAGE Survey in India

A. Kumari, International Institute for Population Sciences, Mumbai, India

1221 | Disability Prevalence and Health

Care Needs among 60+ Population in India: Evidence from Census, 2011

K. Kumar, International Institute for Population Sciences, Mumbai, India

1296 | Preferences for Long-term Care Arrangement Among Frail Community-Dwelling Older Adults in Beijing

Z. Sa, Beijing Normal University, Beijing, China

1637 | The Demand and Supply of the Long Term Care for the Elderly in Asia

R. Hayashi, National Institute of Population and Social Security Research (IPSS), Tokyo, Japan

13:00 - 14:30 **29 - Chinese special session 2**

GBRM 203

Chair: Zhou Haiwang, Shanghai Academy of Social Sciences, China

598 | Ethnic Differences in Chinese Social Participation? Institutional Participation and Voluntary Participation—Based on the 2014 Survey of the Assimilation of Floating Population

Y. Zhao, Renmin University of China, Beijing, China.

604 | 中国死亡率的进度效应——去进度效应的平均预期寿命

H. Dong, Renmin University of China, Beijing, China

683 | 基于地理国情普查数据的人口空间化模拟研究

C. Dong, Chinese Academy of Surveying and mapping, Beijing, China.

783 | 全面二孩背景下的夫妻生育意愿冲突与

幸福感:来自中国真实进步微观调查的证据

T. Wang, Renmin University of China, Beijing, China.

13:00 - 14:30 **30 - Population ageing**

GBRM 205

Chair: Yothin Sawangdee, IPSR, Mahidol University, Thailand

1838 | Active Aging, Mobile Phone Networks, and Labor Force Participation among Rural Northern Thai Elders

Y. Sawangdee, Institute for Population and Social Research, Mahidol University, Nakornpathom, Thailand

418 | The Regional Differences and Driving Mechanism of Aging Population in China

W. Lian Xia, The State Innovative Institute for public Management and Policy Studies, Fudan University, Shanghai, China.

883 | Comparisons of Health Disparities among Aging Populations in Latin America, the Caribbean, Asia and Africa

S. Karim, International Institute for Population Sciences, Mumbai, India

997 | Trends and Determinants of Health Inequalities in Older Population: What Matters More in Past and Present?

M. Siddiqui, Jawaharlal Nehru University, New Delhi, India

1218 | Discordance Between Objective and Subjective Health Report among Senior Citizens of India

K. Banerjee, International Institute for Population Sciences, Mumbai, India

14:30 - 14:45 **Break**

14:45 - 16:15 **31 - Life chance and expectancy** GBRM 101

Chair: Mohammad Mirzaie, NIPR, University of Tehran, Iran / Discussant: E. Nurvidya Arifin, University of Indonesia, and University of Respati Indonesia, Indonesia

550 | Cohort Size and Life Chances: The Chinese Baby boomers and Their Wellbeing

X. Shu, University of California Davis, Davis, USA

1401 | Life Satisfaction of Only Children and Non-Only Children among Chinese College Students: A Family Capital Perspective

J. Liu, Central University of Finance and Economics, Beijing, China

887 | Housing and Living Arrangements in Greater Jakarta

I.D. Utomo, Australian National University, Canberra, Australia.

1657 | Network-Based Social Capital and Mental Health Inequality among Older Adults in Rural South Africa: Findings from HAALSI

S. Yu, The Australian National University, Canberra, Australia.

14:45 - 16:15 **32 - Intergenerational contact, Social policy, child labour** GBRM 103

Chair: Wendy Hartanto, National Population and Family Planning Board (BKKBN), Indonesia

153 | Patterns and Determinants of Intergenerational Contact between Young Adults and Their Parents in Japan

N. Fukuda, Tohoku University, Sendai, Japan

1178 | Policy Success and Failure in Balancing Sex Ratios in India: A Quantitative and Qualitative Policy Evaluation of the 'Nawanshahr Model'

L. Rahm, Center for Population and Development, University Paris Descartes, Paris, France

1622 | Household Characteristics and Determinants of Child Labor and Children's Engagement in Household Chores in Vietnam 2014

T. Ngoc Hoang Dang, Department of Population and Family Planning, Ho Chi Minh, Vietnam; Chulalongkorn University, Bangkok, Thailand

14:45 - 16:15 **33 - Fertility differentials in Southeast Asia**

GBRM 105

Chair: Richard Joanes, United Nations Population Fund (UNFPA), Indonesia

900 | Proximate Determinants of Fertility in Indonesia and the Philippines

S. Lai, University of Malaya, Kuala Lumpur, Malaysia

1390 | Low Fertility Based on Gender Equity Perspectives: Dynamics Between Individual Gender Role Attitudes and Social Norms in Low Fertility Countries

Y. Cho, University of Southern California, Los Angeles, USA.

1593 | Macro Variables that Influence

Fertility Rate in Indonesia: Unbalance Panel Data Regression Analysis.

T. Harsanti, Institute of Statistics, Jakarta, Indonesia.

1623 | Internal Migration and Fertility in Vietnam: A Hypothesis Reexamines Over 30 Years

H. Thi Nguyen, Chulalongkorn University, Bangkok, Thailand

43 | Proximate Determinants and its Influence on Fertility Decline in Vietnam

K. Chandra. Das, International Institute for Population Sciences, Mumbai, India.

14:45 - 16:15 **34 - Family planning policy**

GBRM 107

Chair: Minja Kim Choe, East-West Center, USA

1604 | Providing Post-Partum Family Planning Services in Nepal: Are Providers Supportive?

M. Chandra Puri, CREHPA, Lalitpur, Nepal.

1820 | Family Planning in Indonesia: Sub-National Heterogeneity and Strategic Priorities

M. Ekoriano, National Population and family Planning Board, Jakarta Timur, Indonesia.

1700 | A Comprehensive Review of China's Family Planning Policy: Bringing Women Back

S. Yang, Shanghai University, Shanghai, China

1038 | Determinants of Contraceptive Prevalence Rate in Bangladesh: An Ecological Approach

M. Zakiul Alam, University of Dhaka, Dhaka, Bangladesh

14:45 - 16:15 **35 - Population economics** GBRM 109

Chair: Zuo Xuejin, Shanghai Academy of Social Sciences, China

160 | Does Demographic Structure Influence Public Spending in Nepal? An Analysis of Demography-Public Expenditure Relationship for 2001-2015

T. Pokharel, Nepal Administrative Staff College, Lalitpur, Nepal

1359 | Objective and Subjective Financial Condition and Mortality among Older Adults in China

R. Wang, Nanjing Normal University, Nanjing, China.

1391 | Impact of Sources of Financial Conditions on Perceived Income Adequacy among the Elderly: Indonesia as a Case Study

A. Ananta, Universitas Indonesia, Depok, West Java, Indonesia.

782 | Women's Market Work and Care Responsibilities: Who Exits The Labour Market in Malaysia?

S. Syed Salleh, University of Malaya, Kuala Lumpur, Malaysia

1561 | Evaluaton Happiness Promotion to Increase Productivity in Small and Medium Enterprises in Thailand

K. Suttikasem, Institute for Population and Social Research, Nakhonpathom, Thailand

14:45 - 16:15 **36 - Maternal health and childbearing** GBRM 111

Chair: Ram Sharan Pathak, Department of Population Studies, Tribhuvan University,

Nepal

524 | Initiating a Union Dissolution and Childbearing in Subsequent Unions

S. Vidal, Centre for Demographics Studies, Barcelona, Spain.

1282 | Division of Domestic Labour, Decision Making and Childbearing Intention in Tehran

F. Modiri, National Population Studies and Comprehensive Management, Tehran, Iran, Islamic Republic of

837 | What Contributed to Reduction in Childhood Stunting in India in Last Two Decades? Analysis of Pooled Data from Four Rounds of Indian Demographic Health Survey (1992-2016)

S. Srivastava, International Institute for population Sciences, Mumbai, India

1509 | Determinants of Tobacco Use and its Association with Miscarriage and Low Birth Weight in India

S. Kumar, International Institute for population Sciences, Mumbai, India

14:45 - 16:15 **37 - Population and environment**

GBRM 113

Chair: Haibin Xia, East China Normal University, China.

549 | Cropping Cycle, Food Insecurity and Nutrition Status among Small Holder Farmers: An Evidences of Tribal Dominated Region of India

A. Acharya, CARE INDIA, Bhubaneswar, India.

1147 | Change in Household Environment Condition in India: Evidence from Panel Data.

N. Brahmanandam, International Institute for Population Science(IIPS), Mumbai, India.

1189 | Measuring the Level of Environmentally Friendly Behaviour: A Case Study of South Sumatera Province, Indonesia

Marpaleni, Flinders University, Adelaide, Australia.

1863 | Location Matters: Unravelling Spatial Dimensions of Neighbourhood Level Housing Quality in Kolkata (India)

I. Haque, Jawaharlal Nehru University, New Delhi, India.

14:45 - 16:15 **38 - Economics of ageing**

GBRM 201

Chair: Asghar Zaidi, Centre for Analysis of Social Exclusion London School of Economics and Political Science, UK

724 | Challenges of Population Policy and Demographic Dividend: A Comparative Study of India's and China's Economic Growth

N. Kumar Maurya, University of Lucknow, Lucknow, India

1121 | Gender Differential in Occupation and Income among the Elderly India

L. Ladusingh, International Institute for Population Sciences, Mumbai, India.

1442 | Beyond Poverty: Gender Decomposition of Economic Deprivation among Elderly in India

S. Chakraborty, International Institute for Population Sciences, Mumbai, India

1883 | Challenges and Opportunities of a Global Index of Active and Healthy Ageing:

Learnings from EU's Active Ageing Index

A. Zaidi, Centre for Analysis of Social
Exclusion London School of Economics and
Political Science, London, United Kingdom